



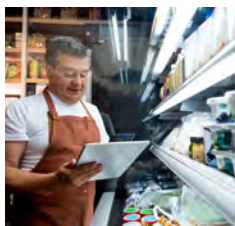
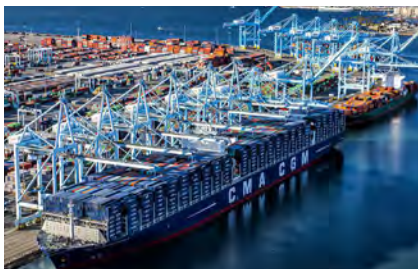
**Biz  
Fed**

**Los Angeles  
County  
Business  
Federation**

Strengthening the Voice of Business Since 2008



# Sponsorship Opportunities



# Committee Sponsors

**B**izFed's influence is growing on every front! Help us maintain our momentum by supporting a policy committee you find beneficial for our economy with a gift of only \$5,000 a year.

- » Anti-Poverty/Economic Mobility
- » AQMD/CARB Coalition
- » CEQA Committee
- » Energy & Environment Committee
- » Health Care Committee
- » Land Use, Housing, Development, Real Estate Committee
- » Polling & Metrics Committee

- » Responsible Governance & Fiscal Accountability
- » Small Business/Labor & Employment Committee
- » Trade & Foreign Investment Committee
- » Transportation Committee
- » Water





# Leadership Roundtables

**B**izFed hosts exclusive small group meetings with policymakers from every level of government to facilitate real dialogue with LA County's Business Community. Join us to get unprecedented access to federal, state, and local leaders.

**\$8,000  
for the Series**

- » Guaranteed seating for 2 executives to the entire Series (Approx. 12-20 a year)
- » Speaking role at 4 Leadership Roundtables
- » Preferred seating at each Roundtable
- » Hosting opportunities

**\$4,500  
for the Series**

- » Speaking role at 3 Leadership Roundtables
- » Preferred seating at each Roundtable
- » Hosting opportunities

**\$2,500  
per Roundtable**

- » Sponsor 1 individual Leadership Roundtable
- » BizFed will handle all the hosting logistics
- » Opportunity to sit next to the policymaker and introduce them



# BizFed Officer Installation Reception

Come celebrate with your fellow BizFed members as we install our new Board Officers and kick off another year of advocating for a stronger economy!

**\$3,000  
Hosting Sponsor**

- » Top Level Logo Placement on event flyer and email promotions, website, and social media
- » Top Logo promotion on the posters at the event
- » Verbal acknowledgment from Tracy Hernandez, BizFed Founding CEO

**\$1,500  
Presenting Sponsor**

- » Listing on event flyer & email promotions, website, & social media
- » Verbal acknowledgment from Tracy Hernandez, BizFed Founding CEO



# BizFed Sacramento Day

**J**oin BizFed LA & BizFed Central Valley for our annual BizFed Sacramento Day! We'll tell Sacramento about our priorities & establish relationships that benefit our regional economies. Convey to CA State policymakers the diversity & power of BizFed's collective voice!

## \$5,000 Presenting Sponsor

- » Top Level Logo Placement on event website, emails, signage, & agenda
- » Includes 5 Tickets & VIP Seating
- » Includes 5 Tickets to VIP Media Briefing Dinner
- » Verbal Recognition at Evening Reception
- » Speaking Opportunity
- » 1 Seat on Planning Committee

## \$3,500 Convening Sponsor

- » Logo Placement on event website, emails, signage, & agenda
- » Includes 3 Tickets & VIP Seating
- » Includes 3 Tickets to VIP Media Briefing Dinner
- » Verbal Recognition at Evening Reception
- » 1 Seat on Planning Committee

## \$2,000 Grassroots Sponsor

- » Logo Placement on event website, emails, signage, & agenda
- » Includes 2 Tickets & VIP Seating
- » Includes 2 Tickets to VIP Media Briefing Dinner
- » 1 Seat on Planning Committee



@BizFed  
#BusinessMakesLAWork

**BizFed** Los Angeles  
County  
Business  
Federation

Strengthening the Voice of Business Since 2008

For sponsorship info, please contact:  
Elizabeth Tulasi, Chief Operations Officer  
(310) 401-4549 | elizabeth.tulasi@bizfed.org





# BizFed Freshman Policymakers Reception

---

## Summer 2019

**M**eet more than 100 government officials shaping the future of business in L.A. County. BizFed is the bridge between Government and business in our region.

***[bizfed.org/freshman](http://bizfed.org/freshman)***

**Biz  
Fed** Los Angeles  
County  
Business  
Federation

Strengthening the Voice of Business Since 2008

**Biz  
FedPAC**

Mobilizing the Voice of Business



# BizFed Freshman Policymakers Sponsorship Opportunities

## **\$15,000 - Title Sponsor**

- Exclusive top level branding of event, singular branding scrolling on tv screens
- Logo included on cover of "Freshman Facebook" plus inside or back cover 4-color ad
- Logo included in custom event step-and-repeat photo backdrop
- Opportunity to introduce electeds during program
- One year of BizFed Silver Level Membership
- Digital attendee list
- 20 tickets to event (\$2,500 value)

## **\$10,000 - Presenting Sponsor**

- Top Logo branding on invitations, marketing materials and at event
- Inside or back cover 4-color ad in printed BizFed "Freshman Facebook"
- Logo included in custom event step-and-repeat photo backdrop
- Opportunity to introduce electeds during program
- One year of BizFed Bronze Level Membership
- Digital attendee list
- 20 tickets to event (\$2,500 value)

## **\$7,500 - Impact Sponsor**

- Top Logo branding on invitations, marketing materials and at event
- Full page color ad in printed BizFed "Freshman Facebook"
- Opportunity to introduce electeds during program
- One year of BizFed Bronze Level Membership
- Premium Logo branding at event
- 15 tickets to event (\$1,875 value)

## **\$4,500 - Community Sponsor**

- High level logo branding on invitations, marketing materials and at event
- Half page color ad in printed BizFed "Freshman Facebook"
- High level logo branding at event
- 10 tickets to event (\$1,250 value)

## **\$2,500 - Grassroots Sponsor**

- Logo branding on invitations, marketing materials and at event
- Listing in printed BizFed "Freshman Facebook" distributed to all attendees
- Logo branding at event
- 5 tickets to event (\$625 value)

**For sponsorship info, please contact:**  
**Kevin Harbour, VP Business Development**  
**(310) 703-2899 | [Kevin.Harbour@bizfed.org](mailto:Kevin.Harbour@bizfed.org)**



# BizFed's Annual Political Forecast Luncheon

**H**ear from political insiders about what to expect in the coming year at the local, state, and federal levels. Everything you need to know to help your business navigate the political climate.

## **\$4,500 Hosting Sponsor**

- » Logo promotion on the posters and projected during event
- » Logo promotion in email invites
- » Verbal acknowledgment from Tracy Hernandez, BizFed CEO
- » Speaking role at event
- » VIP Seating for 8 guests

## **\$3,500 Mobilizing Sponsor**

- » Logo promotion on the posters and projected during event
- » Logo promotion in email invites
- » Verbal acknowledgment from Tracy Hernandez, BizFed CEO
- » VIP Seating for 5 guests

## **\$1,500 Grassroots Sponsor**

- » Association/Organization promotion on the posters and projected during event
- » VIP Seating for 3 guests

**BizFed** Los Angeles  
County  
Business  
Federation  
Strengthening the Voice of Business Since 2008





# BizFed's Annual Holiday Reception

**C**ome celebrate the Holidays with your BizFed Family!

**\$4,500**  
**Hosting Sponsor**

- » Top Level Logo Placement on event flyer & social media
- » Top Logo promotion on the posters at the event
- » Verbal acknowledgement from Tracy Hernandez, BizFed Founding CEO

**\$1,500**  
**Grassroots Sponsor**

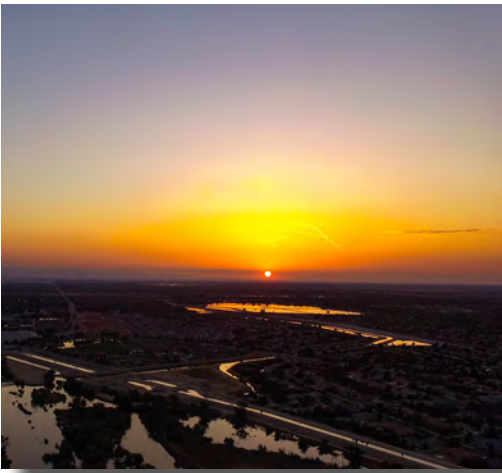
- » Listing on event flyer & email promotions, website, & social media
- » Verbal acknowledgment from Tracy Hernandez, BizFed Founding CEO



@BizFed  
#BusinessMakesLAWork

**BizFed** Los Angeles  
County  
Business  
Federation  
Strengthening the Voice of Business Since 2008

For sponsorship info, please contact:  
Elizabeth Tulasi, Chief Operations Officer  
(310) 401-4549 | elizabeth.tulasi@bizfed.org



**BizFed** Central Valley Business Federation  
Strengthening the Voice of Business

**B**izFed Central Valley brings together associations and employers — large and small — to share information, expertise, connections and research.

For more information visit:

*[BizFedCentralValley.org](http://BizFedCentralValley.org)*





**Mobilizing the Voice of Business**

**B**izFedPAC is a nonpartisan political action committee created to identify and support pro-business local candidates who are committed to promoting meaningful change, economic progress, job creation and strong, healthy communities throughout Los Angeles County. For more information visit:

***BizFedPAC.org***

---



**Defining the Voice of Business**

**B**izFed Institute educates, engages, equips, and measures consensus solutions from civically minded, nonprofit, academic, and regional thought leaders for the purpose of building strong communities throughout California. For more information visit:

***BizFedInstitute.org***



**Thank you for considering these  
sponsorship opportunities.**

**Your generosity allows us to  
keep up the fight for jobs in  
Los Angeles County!**



6055 E. Washington Blvd. #1005, Commerce, CA 90040  
323.889.4348 [bizfed.org](http://bizfed.org) | [@BizFed](https://twitter.com/BizFed) | [facebook.com/bizfed](https://facebook.com/bizfed)