

POLITICAL FORECAST

2022 Election Cycle

**PANEL #1:
GUBERNATORIAL RECALL LESSONS**

**PANEL #2:
FEDERAL MIDTERM ELECTIONS**

**PANEL #3:
LA REGION REDISTRICTING IMPACTS**

**Get the inside scoop
on what's brewing
at the local, state, &
federal levels from
our most connected
political insiders**

TITLE SPONSOR

WATSON
LAND COMPANY

HEALTH & SAFETY

IN COMPLIANCE WITH THE CITY OF LOS ANGELES INDOOR VACCINATION REQUIREMENTS (ORDINANCE NO. 187219 EFFECTIVE NOVEMBER 8, 2021) PROOF OF VACCINATION IS REQUIRED UPON ENTRY. PLEASE REMEMBER TO BRING THE FOLLOWING TO BE ADMITTED INTO THE EVENT:

1. A valid ID and one of the below:

2. Proof of Vaccination

- Vaccination card issued by the U.S. Centers for Disease Control and Prevention (CDC), or similar documentation issued by another foreign governmental agency, such as the World Health Organization
- Photocopy of a vaccination card or a photograph stored on a phone or electronic device
- Personal digital COVID-19 vaccine record issued by the State of California, or similar documentation issued by another state, local, or foreign governmental jurisdiction, or by a private company
- Documentation of a COVID-19 vaccination from a healthcare provider

3. For religious or medical exemptions only:

- A negative COVID-19 test within 72 hours before the event.



SAFEPASS L.A.

THE CITY OF LOS ANGELES REQUIRES YOU TO BE VACCINATED AGAINST COVID-19 TO ENTER THIS BUSINESS.

IF YOU ARE ELIGIBLE FOR VACCINATION, PLEASE HAVE YOUR PROOF OF
VACCINATION AND ID READY (ID REQUIRED IF AGE 18+)

VACCINATION CARD	
1st	<input checked="" type="checkbox"/> _____
2nd	<input checked="" type="checkbox"/> COVID-19

	18+ <input checked="" type="checkbox"/>
_____	_____
_____	_____

Scan QR code to access your digital vaccine record
<https://myvaccinerecord.cdph.ca.gov>



As of November 8, 2021, patrons must show proof of full vaccination against COVID-19 to enter the indoor portion of this business. The following exemptions to this requirement are permitted: making deliveries or pickups, providing services or repairs, emergency or regulatory purposes, to get to the outdoor portion of the business, to use the restroom, or for picking up items such as food for take-out or delivery. In addition, exemptions are available for sincerely held religious beliefs or a medical condition. Patrons using medical or religious exemptions are required to show proof of a negative COVID-19 test taken within 72 hours of entry into the indoor portion of this business.



For more information visit:

SafePassLA.org



THANK YOU FOR JOINING US

The packed 2022 election cycle promises to be of significant importance to the business community as we look to elected officials to implement smart reopening and post-pandemic policies. **BizFed's 9th Annual Political Forecast** zeroes in on hot button issues and hotly contested races that are likely to shape the political landscape at the local, state, and federal levels in 2022.

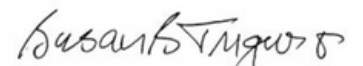
Our featured speakers, moderators, and panelists have you covered at all levels of government. They bring diverse perspectives to the table. They spearhead campaigns, give voice to candidates and constituents, lead political parties, draw new district lines, oversee government affairs in the private sector, and more. They come together from both sides of the aisle to answer YOUR questions.

We're proud to mark our return to in-person programming with our all-star line-up of political insiders. This year, we've also opened the event to non-members and media coverage. We feel it's important to share our wealth of insider intel with all stakeholders.


Special thanks to **Trini Jimenez** and **Watson Land Co.** for their generous Title Sponsorship, **Greater Los Angeles REALTORS** and **Rebuild SoCal Partnership** for their Impact Sponsorship, and **Dulce Vasquez** and **Arizona State University** for welcoming us to use their space in the historic Herald Examiner Building.


Producing Southern California's most important forecast has always been a team effort. We are so grateful to all our friends and partners who stepped up to sponsor, promote, or simply attend Political Forecast 2021. We're only able to continue this annual intel-sharing tradition with your support.


Donna Duperron
 BizFed Chair 2021


Susan Sifuentes Trigueros
 BizFed PAC Chair


Tracy Hernández
 BizFed Founding CEO


David Englin
 BizFed President


De'Andre Valencia
 BizFed PAC President
 BizFed Chief Advocacy Officer


Lara Larramendi
 BizFed Government Relations Director

PROGRAM SCHEDULE

11:15 am - REGISTRATION & NETWORKING

12:00 pm - LUNCH:

BizFed Legislative Outreach Video
De'Andre Valencia - Team Advocacy & Committee Achievements

12:30 pm - WELCOME:

Donna Duperron, BizFed Chair
Dulce Vasquez, Director, Office of University Affairs, Arizona State University

12:35 pm - OPENING REMARKS:

Trini Jimenez, Vice President, Public Affairs, Watson Land Co.

12:39 pm - PANEL #1 INTRODUCTION:

Brissa Sotelo-Vargas, Director, Community Relations & Government Affairs, Valero

PANEL #1: CA Political Perspectives

12:40 pm - CALIFORNIA'S 2021 GUBERNATORIAL RECALL:

Lessons learned and impacts on policy making and elections in 2022

PANELISTS:

Courtnei Pugh, Partner, Hilltop Public Solutions
Darry Sragow, Publisher, California Target Book
Ace Smith, Partner, Bearstar Strategies

MODERATOR:

Seema Mehta, Political Writer, Los Angeles Times



Seema Mehta
Los Angeles Times

Courtnei Pugh
Hilltop Public Solutions

Ace Smith
Bearstar Strategies

Darry Sragow
California Target Book

1:15 pm - WELLNESS CHECK-IN:

Tracy Hernandez, BizFed Founding CEO

1:21 pm - IMPLEMENTING THE INFRASTRUCTURE INVESTMENT & JOBS ACT OF 2021:

Jon Switalski, Executive Director, ReBuild SoCal Partnership

1:25 pm - PANEL #2 INTRODUCTION:

Frank Girardot, Senior Director, Communications, BYD North America

PANEL #2: CA Parties' Perspectives

1:26 pm - FEDERAL MIDTERM ELECTIONS:

Issues, policies, and politics that will drive control of the House of Representatives in the 2022 midterm elections

PANELISTS:

Ellie Hockenbury, Deputy Executive Director & Communications Director,
CA Republican Party

Joe Mathews, Editor & Columnist, Zócalo Public Square/Arizona State University

Ajay Mohan, Executive Director, Orange County Democratic Party

MODERATOR:

Don Polese, Vectis DC



Don Polese
Vectis DC

Ellie Hockenbury
CA Republican Party

Joe Mathews
Zócalo Public Square

Ajay Mohan
Democratic Party of Orange County

2:02 pm - GLAR SEGMENT

Ryan Ole Hass, Past President, Greater Los Angeles REALTORS

2:06 pm - PANEL #3 INTRODUCTION:

Joe Leighton, Senior External Government Affairs, Chevron



PANEL #3: Local Redistricting

2:07 pm - LOS ANGELES REGION:

Impacts of redistricting on local elections, governance, and politics in 2022

PANELISTS:

Frank Cárdenas, Executive Director, LA City Council Redistricting Commission 2021

Robb Korinke, Executive Director, Grassroots Lab & BizFed PAC

Carolyn Williams, Co-Chair, LA County Citizens Redistricting Commission

MODERATOR:

Susan Sifuentes Trigueros, BizFed PAC Chair, Senior Regional Public Affairs Manager, Southern California Gas Co.



Susan Sifuentes Trigueros
SoCal Gas

Frank Cardenas
LA City Council
Redistricting Commission

Robb Korinke
GrassrootsLab

Carolyn Williams
LA County
Citizens Redistricting Commission

PROGRAM WRAP-UP

2:42 pm - CLOSING REMARKS:

Tracy Hernandez, BizFed Founding CEO

2:50 pm - FAREWELL & NETWORKING



REDISTRICTING GLOSSARY

- A -

Apportionment: The process of allocating a fixed number of seats in a governmental body among established political units. Following each Decennial Census, the seats in the U.S. House of Representatives are reapportioned among the states. The result is that each state is assigned its number of congressional seats for the next decade. Reapportionment does not result in the establishment of new district boundaries. The term is sometimes used imprecisely to mean redistricting.

- C -

Census Block: The smallest unit of census geography for which population data are reported. The U.S. Census Bureau designates the census blocks, which are generally bounded by visible physical features such as roads, creeks, or railroads, although in some cases they may be bounded by non-visible features such as city limits.

Census Block Group: A cluster of census blocks within a census tract designated by the U.S. Census Bureau as a subdivision of that census tract.

Census Data: Information and statistics on the U.S. population, gathered by the U.S. Census Bureau and released to the states.

Census Tract: A unit of census geography defined by the U.S. Census Bureau for the purpose of presenting Decennial Census data. Census tracts are made up of block groups. Their boundaries generally follow visible features, though in some circumstances their boundaries may follow governmental unit boundaries or other non-visible features. In general, census tracts must contain between 1,500 and 8,000 inhabitants.

Community of interest: A grouping of people concentrated in a geographic area, such as in a city or a neighborhood that share similar political, social, or economic interests.

Compactness: A term used to describe a district's geographic shape. Compactness in redistricting cases often focuses on the regularity or jaggedness of a district boundary and on the extent to which the district's geographic territory is dispersed from its center.

Contiguity: Adjacency. For redistricting purposes, a district is considered to be contiguous if all parts of the district are connected to each other, so that the entire district is within a continuous boundary. Legal standards governing redistricting for various governmental bodies often require all of the territory in each district to be contiguous.

County Election Precincts: Geographic units established for the purpose of election administration. The voters in an election precinct usually vote at a single polling place, so the votes cast in the precinct may be counted separately from other precincts.

REDISTRICTING GLOSSARY

Cracking or Fracturing: A form of dilution occurring when districts are drawn so as to divide a geographically compact group of people with shared characteristics, for example, dividing a minority community into two or more districts. If the minority community is politically cohesive and could elect a preferred candidate if placed in one district, but, due to cracking, the minority population is divided into two or more districts where it no longer has any electoral control or influence, the voting strength of the minority population is diluted.

Crossover District: One in which minorities do not form a majority, but still reliably control the outcome of the election with some non-minority voters crossing over to vote with the minority group.

- D -

Deviation: The amount by which a district's population differs from the ideal population. The deviation is the amount of population that is less than or greater than the ideal population of a district. In redistricting, a slight deviation may be permissible if based on rational state policies.

Differential undercount: The extent to which one group of persons is more likely to be undercounted in the Decennial Census than other groups. For example, in the 1990 Decennial Census, although almost 100 percent of white persons were counted, approximately 5 percent of black and Hispanic persons were not counted. See "Undercount."

Dilution or Vote Dilution: Occurs when the voting strength of a politically cohesive minority group is weakened or watered down by an election system, redistricting plan, other electoral process or procedure. For example, the creation of districts that either: 1) divide cohesive members of a racial or ethnic minority group among several districts, artificially reducing the group's opportunity to influence elections or 2) place extraordinarily high percentages of members of a racial or ethnic minority group in one or more districts, so that minority voting strength is artificially limited to those districts and is minimized in neighboring districts.

- E -

Equal Protection Clause: See "Fourteenth Amendment to the U.S. Constitution."

- F -

Fourteenth Amendment to the U.S. Constitution: The U.S. Constitution provision that includes the Equal Protection Clause, which prohibits the state from denying persons equal protection of the law. The Equal Protection Clause is the primary basis of the one-person, one-vote principle.

REDISTRICTING GLOSSARY

Fifteenth Amendment to the U.S. Constitution: The U.S. Constitution provision indicating that the right to vote may not be denied or abridged on account of race.

Fragmentation: The division of a geographically concentrated cohesive group, such as a racial or political group, among different districts for the purpose of minimizing the group's voting strength.

Fracturing: See definition of "Cracking."

– G –

Geographic Information System (GIS): A graphics-based computer system that relates geographic features (such as census tracts, roads, or counties) to data about those features (such as population, race, or income).

Gerrymander: A district or set of districts typically characterized by unusual boundaries, which is drawn to favor one or more individual interest groups over others or to increase the likelihood of a particular political result.

Gingles Factors: The U.S. Supreme Court in *Thornburg v. Gingles*, 478 U.S. 30 (1986) set forth the three preconditions that a minority group must prove to establish a violation of Section 2 of the Voting Rights Act. The preconditions are: 1) a minority group must be sufficiently large and geographically compact to comprise a majority of the district; 2) the minority group must be politically cohesive (it must demonstrate a pattern of voting for the same candidates); and 3) White voters vote sufficiently as a bloc usually to defeat the minority group's preferred candidate.

– H –

Homogenous Precinct/Homogenous District: A precinct or district that is nearly all of one race, usually more than 80 percent of one racial group.

– I –

Ideal Population: The number of persons to be placed in each district to obtain equal population. The ideal population for each district is obtained by taking the total population of the state or jurisdiction and dividing it by the number of districts to be redistricted in the state or jurisdiction.

Influence District: Where a minority group constitutes a less than controlling voting group in a district but nevertheless constitutes such a sizeable minority in the district so that they can influence the outcome of an election.

– M –

Majority – Minority District: A district where a minority group usually constitutes the majority of voters and can control the outcome of elections.



REDISTRICTING GLOSSARY

Method of Equal Proportions: The mathematical formula used, as provided by Federal statute, to reapportion congressional seats among the states after each Decennial Census.

Minority-coalition district: One in which two or more minority groups combine to form a majority in a district.

– O –

One Person, One Vote: The principle that each person's vote should count equally with every other person's vote, which is affected by the allocation of the same or substantially the same population to each district of a particular type, such as a congressional district. The courts derive the one-person, one-vote standard primarily from the Equal Protection Clause of the Fourteenth Amendment to the U.S. Constitution. The Fourteenth Amendment also includes the concept that each person in a district (including those not eligible to vote) is entitled to representational equality, that is, to have the same access to the elected representative as each person in every other district.

– P –

Packing: Drawing districts in a way that puts as many people with the same characteristics into as few districts as possible. Creating a district with a very high concentration of a particular group of voters, such as a racial or political group, tending to result in the election of the group's candidate of choice in any election in that district and the dilution of the group's voting strength in neighboring districts.

P.L. (Public Law) 94-171: The Federal statute that requires the U.S. Census Bureau to provide, by April 1 of each year following a Decennial Census, the population and race data necessary for redistricting. Because of COVID-19 in 2020, the time period for conducting the Decennial Census was extended to October 15, 2020, thus, resulting in a later delivery date of the final 2020 census data.

Political Subdivision: A division of a state; in California, counties.

Population Estimates: An approximation of the population of a geographic unit at a point in the past or present for which an actual population count is not available.

Population Projections: An approximation of the population of a geographic unit at a point in the future, based on specific assumptions regarding future demographic trends in the geographic unit.

Precinct: An area created by election officials to group voters in a designated polling place so that an election can be conducted.

REDISTRICTING GLOSSARY

– R –

Racially-Polarized Voting: The term used to describe circumstances in which the voting preferences of a racial or ethnic group consistently vary from those of other racial or ethnic groups, particularly when the different voting preferences are based on the race of the candidate; also referred to as “racial bloc voting.”

Redistricting: The process using the 2020 population statistics from the U.S. Census Bureau to redraw the boundaries of electoral districts to ensure the districts are as equal in population as reasonably can be. The process impacts all levels of government.

Redistricting Data Unit or Redistricting Unit (RDU): RDUs are primarily census tracts within the Los Angeles County from which data have been compiled for use in the redistricting software.

– S –

Statistical Sampling: The statistical method by which characteristics of a small group are measured and applied to the population as-a-whole.

– T –

Topologically Integrated Geographic Encoding and Referencing System (TIGER): The cartographic map database, prepared by the U.S. Census Bureau, which contains the geographic base units (census tracts) that will be used for redistricting.

Total Range of Deviation: The range over which the populations of all districts in a redistricting plan deviate from the ideal, target, or average district population.

Traditional Districting Principles: Factors traditionally used by a state or local jurisdiction to perform redistricting. Examples of traditional redistricting principles may include compactness, contiguity, respect for political subdivisions, respect for communities of interest, and protection of incumbents.

– U –

Undercount: The error in U.S. Census Bureau data that results from the failure to count some persons or housing units in the Decennial Census. Historically, certain groups, such as members of racial or ethnic minorities, have been disproportionately undercounted by the U.S. Census Bureau.

– V –

Voting Age Population: The number of persons in a geographic unit who are at least 18 years of age. Because some population groups, such as racial or ethnic minorities, tend to be younger on average than the population as a whole, the voting age populations are frequently compared in evaluating the potential voting strength of those groups.

REDISTRICTING GLOSSARY

Voting Age Citizen Population: The number of persons in a geographic unit who are age 18 plus and who, as citizens, are eligible to vote.

Voting Rights Act: The Federal statute prohibiting discrimination in voting practices on the basis of race or language group, codified as 42 U.S.C. Section 1973 et seq. The official title of the Act is the Voting Rights Act of 1965. The Act was amended in 1982. Section 2, and in some cases Section 5, of the Act are important for redistricting.

- **Section 2:** Prohibits the adoption of voting practices or procedures that abridge the right to vote on the basis of race or language group. This section applies to all states and other governmental units and may be used to challenge a redistricting plan that intentionally discriminates against a racial or language minority group or that results in such discrimination.

- **Section 5:** Requires that jurisdictions subject to a court order entered under Section 3(c) of the Voting Rights Act must obtain preclearance by a three-judge Federal district court in the District of Columbia of proposed changes to the jurisdiction's election procedures (including changes in district lines). Only after preclearance is obtained are the changes put into effect. Los Angeles County is not required to obtain preclearance for its redistricting.

MEET THE SPEAKERS

It's not easy to get California's most in-demand political speakers in the same room – especially in the lead-up to a historically busy election season. In Los Angeles County alone, an estimated 1,000+ candidates will be vying for 250 open seats across all 88 cities in 2022.

The master strategists, analysts, and storytellers you'll meet in the following pages of this program have traveled from the nation's capital and every corner of Southern California to prepare you for the whirlwind election cycle ahead. Our hats go off to the rockstar schedulers who helped make this all-star roster possible.

Lara L. Larramendi

Lara Larramendi

BizFed Government Relations Director



DE'ANDRE VALENCIA

BizFed Chief Advocacy Officer

BizFed PAC President

De'Andre Valencia is proud to amplify the voices of 215 diverse business groups representing 410,000 employers with more than 5 million employees as Chief Advocacy Officer for the Los Angeles County Business Federation "BizFed." He oversees six of BizFed's wide-ranging committees: Advisory, Advocacy, Anti-Poverty & Economic Mobility, Polling/Metrics, Responsible Governance, and the Executive Committee.



De'Andre also serves as President of BizFed PAC, a project of BizFed that has endorsed 276 successful candidates across Los Angeles County. It is the only nonpartisan business political action committee focused on local elections in all 88 cities across the county.

Prior to joining BizFed in 2017, De'Andre served as Government Affairs Director for the Building Industry Association of Southern California, Los Angeles/Ventura County (BIA-LAV). He managed all legislative and policy issues affecting residential development and affordability throughout LA County, and cultivated relationships with coalition partners to leverage influence. He also developed the chapter's political action strategic plan in full compliance with state and federal laws. Throughout his tenure at BIA-LAV, De'Andre led the association's Sustainability, Political Resources, Asian Development, and Emerging Leaders of Tomorrow committees.

De'Andre earned his Bachelor of Arts degree in Political Science from the University of La Verne and has served on the Planning, Vehicle Parking District, and Charter Review commissions for the City of Pomona.

DONNA DUPERRON

BizFed Chair 2021

President & CEO, Torrance Chamber of Commerce

Donna Duperron is a dedicated and widely respected community leader who consistently develops and advances personal and business relationships benefitting social, educational, civic, and community realms. Her expertise in relationship-based management and strategic team building experience has allowed for collaboration with notable community and business leaders in creating esteemed events and achieving mutually beneficial goals.



As President & CEO for Torrance Area Chamber of Commerce, Donna vigorously contributes efforts towards advancing Board directives. For more than 18 years, she has succeeded in revitalizing programs and securing financial vitality for nonprofit organizations. Her key achievements include establishing partnerships such as TACC Foundation - Adopt a School Program, Business for a Day, Mentor Program, and State of Education. She also takes pride in developing task forces to better serve the civic and business community.

In addition to her chamber responsibilities, Donna remains an active committee executive for the Western Association of Chamber Executives, in which she has been recognized as the Hathaway "Staff Person of the Year." She serves or has served with the South Bay Association of Chambers of Commerce, Southern California Association of Chamber of Commerce Executives, Torrance Unified School District Bond Oversight Committee, Torrance Kiwanis Club, and Del Amo Rotary Club. She has been at the helm of chairing professional and charitable events for organizations including the Pediatric Therapy Network, American Honda Motor Company, City of Torrance, and Torrance Unified School District.

Donna was honored in 2016 as "South Bay Woman of the Year" for her service, dedication, and commitment to making the South Bay a more wonderful place to live, work, and play. Her leadership in the community creates an indelible ripple effect of positive change.

Her keen ability to develop successful long-term relationships is evidenced by her 38-year marriage to Gary. They have three grown children and two grandchildren.

DULCE VASQUEZ

Director of Strategic Partnerships, Office of the President,
Arizona State University

Dulce Vasquez is an education advocate, changemaker, and passionate community leader. She serves as Director of University Affairs for Arizona State University. She is responsible for developing strategic university-wide partnerships, furthering university initiatives, managing special projects, and expanding ASU's presence in Los Angeles. Through her work, she interacts with businesses, community organizations, school districts, think-tanks, and government agencies, and connects them with every level of the university, from athletics to academics.



She was previously the Managing Director of Zócalo Public Square, L.A.'s civic forum. She ran Zócalo's programming, finances, strategic partnerships, development, and human resources for nine years. During her tenure, she oversaw the planning and executing of over 500 events with ambassadors, authors, politicians, journalists, artists, and community leaders.

After spending half of her childhood undocumented, she attended Northwestern University as a Gates Millennium Scholar and received a B.A. in political science and philosophy. She also studied at The Institut d'Etudes Politiques de Paris. She has a Master's in Public Policy from the UCLA Luskin School of Public Affairs.

Dulce was appointed by Los Angeles Mayor Eric Garcetti to serve as a Commissioner to El Pueblo Historic Monument, Los Angeles' birthplace. She was publicly elected to represent her Assembly District on the Central Committee of the Los Angeles County Democratic Party, the largest local chapter in the country. She is also on the advisory board of the U.S.-Mexico Committee at the Pacific Council on International Policy, and is on the Board of Trustees at Zócalo Public Square.

Dulce has completed various leadership-training programs, including the Southern California Leadership Network, the Riordan Leadership Institute, and was recently selected to the 2021 cohort of Coro Southern California's Lead LA.

In her spare time, she volunteers as a public affairs associate with the American Red Cross of Los Angeles. She mentors young women with the Girls Today Women Tomorrow youth development program and the Riordan Programs.

TRINI JIMENEZ

Vice President of Public Affairs, Watson Land Co.

Trini Jimenez serves as an advocate for Watson Land Co. and its customers. He is the liaison to local government and the communities in which Watson has a presence. With over twenty years of successful advocacy experience in both the private and public sectors, Trini engages with elected officials and government agencies at the local and state level, implementing public affairs strategies with an emphasis in supporting the business community and promoting job creation.



Prior to joining Watson Land Co., Trini served as Director of Government Affairs for the BNSF Railway Company with responsibility for the Southern California region. Prior to working in the field of Government Affairs, Trini practiced law as an attorney with the firm of Burke, Williams and Sorensen in Los Angeles.

Trini serves on the Board of the California Taxpayers Association "CalTax," the CalChamber Public Affairs Council, California Freight Advisory Committee, the Los Angeles County Business Federation "BizFed," Los Angeles Area Chamber of Commerce, and Long Beach Area Chamber of Commerce.

He received his J.D. from the UCLA School of Law and a B.A. in Political Science from California State University, Long Beach.

BRISSA SOTELO-VARGAS

BizFed Chair Elect 2021

Director, Community Relations & Government Affairs, Valero

Brissa Sotelo-Vargas manages and coordinates communication and stakeholder management activities for Valero, handling everything from government affairs and community relations to media strategy and crisis communications. Her duties include remaining current on all salient industry-related issues occurring locally and globally. She monitors and analyzes the business, political, and regulatory environment to assess current or potential issues that could affect the company's reputation and license to operate.



Brissa also manages social investment activities, empowering the community to work with private industry to achieve mutually beneficial results.

Brissa serves on several boards in the community, including Board Member of the San Pedro, Peninsula & Wilmington YMCA, Board Member of the Los Angeles Chamber Executive Board, BizFed Board, Los Angeles Economic Development Corporation Board, the Regional Hispanic Chamber of Commerce, Hispanas Organized for Political Equality Advisory Board and Institute graduate, and past fellow of the Southern California Leadership Network.

She holds two masters from the University of Southern California in Communication Management from the Annenberg School of Communication and Journalism and another in Public Policy from the Sol Price School of Policy Planning and Development.



SEEMA MEHTA

Political Writer, Los Angeles Times

Seema Mehta is a political writer for the Los Angeles Times who covered the 2020 presidential campaign. She was a Knight-Wallace fellow at the University of Michigan for the 2018-19 academic year studying automation and AI and their impacts on voters in the Midwest. She previously covered the 2016, 2012 and 2008 presidential campaigns, as well as multiple gubernatorial, Senate and mayoral races.



A graduate of Syracuse University, the East Coast native swore when she joined The Times in 1998 that she would only spend a few years on the Left Coast. Many years, a husband, a house and a few cats later, she can't imagine living somewhere she couldn't golf year-round.

COURTNI PUGH

Partner, Hilltop Public Solutions

Courtnei Pugh leads electoral, policy, and issue-based campaigns and projects in California for Hilltop Public Solutions. She has been a fixture in California and national politics for over a decade, including a stint as California State Director for Kamala Harris for President. Courtnei has also served as Senior Political Advisor for California Senate President pro tem Kevin de León and California Deputy State Director for Hillary Clinton's 2016 bid for president.



In addition to electoral politics, Pugh is also the lead on Hilltop's policy and issue-based campaigns and projects throughout the state.

Before joining Hilltop, Pugh served as Executive Director of SEIU Local 99. In this post, she helped lead negotiations for a landmark increase in the minimum wage for Los Angeles Unified School District employees. Hailed as a significant victory in the nationwide "Fight for \$15," the wage increase capped Courtnei's impressive career as the head of the local.

In other positions, Pugh served as Political Director of the Los Angeles County Federation of Labor. She was the first woman and first Asian America to serve in this post. She also served as Executive Director of the SEIU California State Council, and in 2010 played a key role in running labor's independent expenditure campaign in support of Jerry Brown for Governor, including overseeing outreach to Hispanic Voters through Cambiando California.

A veteran political strategist and community organizer, Pugh has managed numerous multimillion-dollar independent expenditure campaigns in California. She began her career as a field organizer in Oakland, California. She later held senior posts in the presidential campaigns of John Edwards for President, Kerry-Edwards 2004, and Gore-Lieberman 2000. She served as Legislative Director for U.S. Congressman Danny Davis in Washington, D.C.

She has consistently been named among Capitol Weekly's "Top 100 Influencers" in California.

Pugh holds a B.A. in Political Science from Ball State University in Muncie, Indiana.



ACE SMITH

Partner, Bearstar Strategies

Ace Smith is a 30-year veteran of state and national politics and has directed winning campaigns from District Attorney to President. With deep experience on the West Coast, Ace specializes in high-stakes political, governmental, and public affairs campaigns. He has been a key advisor to dozens of California's rising stars of the last decade, including Vice President Kamala Harris and Governor Gavin Newsom.



Over the years, Ace has worked with a roster of clients, including Virginia Governor Doug Wilder, Chicago Mayor Richard Daley, Illinois Senator Paul Simon, Texas Governor Ann Richards, Washington Senator Patty Murray, California Governor Gray Davis, California Senator Dianne Feinstein, California Senator Barbara Boxer, Missouri Congressman Richard Gephardt, Howard Dean for President, and Hillary Clinton for President.

In 2005, Ace directed Antonio Villaraigosa's underdog campaign for Mayor of Los Angeles, marking the first time since the 1930s that a Los Angeles Mayor had been defeated after a single term. In 2006, he ran Jerry Brown's campaign for California Attorney General and served as State Director for then-U.S. Senator Hillary Clinton's campaigns in California, Texas, and North Carolina during the 2008 Democratic Presidential Primary. In 2010, Ace and his partners were instrumental in the historic election of San Francisco District Attorney Kamala Harris as California Attorney General and San Francisco Mayor Gavin Newsom as California Lieutenant Governor. Ace ran San Francisco Mayor Ed Lee's victorious campaign and led the historic Proposition 30 effort for Governor Brown.

The subject of several newspaper profiles, Ace was called "legendary" by The New York Times. The San Francisco Chronicle declared him political campaign manager "heavyweight champion of the year."

Ace earned his B.A. in English Literature from the University of California, Berkeley.



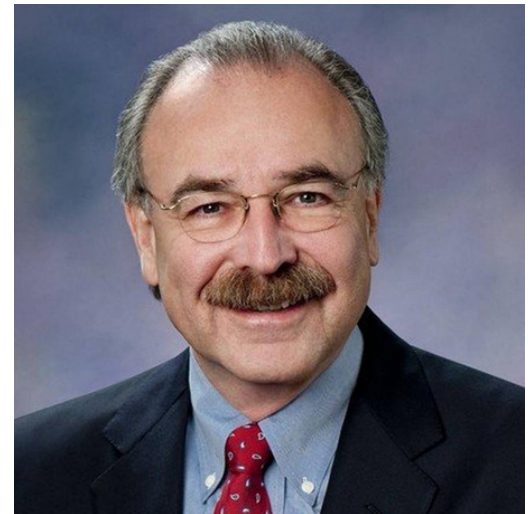
DARRY SRAGOW

Publisher, California Target Book

Senior Counsel, Dentons

Adjunct Assistant Professor, University of Southern California

Darry Sragow is widely recognized as one of California's leading strategists for political campaigns, corporations, Native American tribes, and nonprofit organizations. He has been hailed as one of the most influential attorneys in Los Angeles by the Los Angeles Business Journal and has served on the boards of various community and nonprofit organizations.



Darry has managed five statewide races in California: three for governor and two for the U.S. Senate. For nearly a decade, he served as chief campaign strategist for California State Assembly Democrats. Darry successfully managed six bond campaigns that required supermajorities to pass, four that raised more than \$13 billion for the Los Angeles Unified School District and two that raised more than \$2 billion for the Los Angeles Community College District.

He has held multiple senior positions in state and federal government, including Deputy California Insurance Commissioner, Chief of Staff to the Chairman of the California Board of Equalization, and senior staff member for U.S. Senator Birch Bayh and the U.S. Senate Committee on Veterans Affairs.

Darry previously directed the USC/Los Angeles Times poll and for many years has taught undergraduate political science, initially at the University of California, Berkeley, and currently at the University of Southern California, where he was nominated for a "Best Teacher of the Year" award.

Darry served as a Lieutenant in the U.S. Navy.

JON SWITALSKI

Executive Director, Rebuild SoCal Partnership

Jon Switalski serves as the Executive Director of the Rebuild SoCal Partnership (RSCP). RSCP is comprised of 2,750 construction firms that employ more than 90,000 union workers in the 12 counties of Southern California. Their mission is to engage elected officials and educate the public on the need for continued infrastructure funding creating thousands of career construction jobs in our communities.



Prior to joining Rebuild SoCal Partnership, Jon served as the head of Spring Street Consulting, a strategic public affairs and communications firm. Since February 2019, Jon has held the title of Executive Director of Californians for Balanced Energy Solutions. His specialties include campaign tactics and communication, energy and environmental policy, open space revitalization, and equitable community engagement.

Jon previously held the positions of Director of External Affairs at River LA, and Vice President of Government Relations and Business Development at Ebus Inc.

Jon was elected to serve as Michigan State Representative from January 2009 to December 2014. He was elected to serve as a member of the Macomb County Commission from January 2005 to December 2008.

Jon holds a Bachelor of Science degree from Grand Valley State in Michigan. In his spare time, he enjoys playing golf, hiking, and, of course, spending as much time at the beach as possible. Jon also is an avid traveler.

FRANK GIRARDOT

Senior Communications Director, BYD North America

Frank Girardot is an author, journalist, victim advocate, and radio host who currently serves as senior communications director for BYD Motors in Los Angeles. He has been with the global EV, electronics, and PPE manufacturer since 2019, guiding public relations, government relations, and marketing in North America.

An award-winning former investigative journalist, Frank got his start in media as a copy boy at the Los Angeles Herald-Examiner. He later worked for the Ontario Daily Report, the San Gabriel Valley Tribune, and the Pasadena Star-News.

Frank has been honored with the Southern California Press Association's award for Investigative Journalism and the Los Angeles Press Club's First Place Award for sportswriting. He was a finalist for the University of Florida Award for Investigative Data Journalism in 2015.

Frank is also the author of true crime non-fiction books. In December 2020, he began hosting LA 85, an episodic contextual true crime podcast.





DON POLESE

Founder & Managing Partner, Vectis DC

Don Polese has spent over three decades on Capitol Hill, both with leading members of Congress and as a consultant to California-based companies and organizations in the private and public sectors. He leads the Vectis DC team and helps clients navigate a variety of complicated issues, including DACA/immigration reform, police reform, school funding, and water policy.



Through his longtime service as District Chief of Staff to San Diego and Orange County Appropriations Subcommittee Chairman Ron Packard, Don is deeply knowledgeable about the annual federal budget and appropriations process.

He also has cultivated close relationships within key federal agencies in Washington, D.C. and in California. Don has spent many years working with defense, energy, education, interior, transportation, and environmental leaders. He has assisted in the procurement of federal permits for multiple public and private projects throughout the Golden State.

Don serves on the Board of Directors of the Los Angeles County Business Federation "BizFed" and the Advisory Board of Washington Abstract, a collaborative, cloud-based tool to track, organize, and impact legislation.

Don is a graduate of Georgetown University, where he received a B.A. in Government. He resides in Arlington, Virginia with his wife Jane.

ELLIE HOCKENBURY

Deputy Executive Director & Communications Director,
California Republican Party

Ellie Hockenbury has nearly 15 years of experience in politics and political communications at the state and national levels. Before joining the California Republican Party (CACOP), Ellie served as the Republican National Committee's (RNC) Deputy Director of Regional Communications, working closely with state parties and supporting Republican campaigns up and down the ballot in targeted races around the country.



Previously at the RNC, she served as the Director of Media Affairs in the 2014 election cycle, managing the party's surrogate and booking operation, and as the Colorado Victory Communications Director in 2012.

During the 2016 election cycle, Ellie served as the Republican State Leadership Committee's Communications Director, working to elect down-ballot, state-level Republicans nationwide. On Election Day 2016, Republicans maintained a record 69 of 99 legislative chamber majorities, held 31 lieutenant governors, and grew to 31 secretaries of state.

Hockenbury grew up in Mississippi, where her first position in politics was an internship with Governor Haley Barbour's reelection campaign in 2007.

She is a graduate of the University of Southern California.



JOE MATHEWS

Editor & Columnist, Zócalo Public Square,
Arizona State University

Joe Mathews is the innovation editor and syndicated California columnist at Zócalo Public Square, a California-based media and civic nonprofit and Arizona State University affiliate. Joe's weekly column appears in 30+ newspapers across California. He recently began a second column, The Democracy Column, on everyday democracy around the world, with Swissinfo.



Joe is co-president of the Global Forum on Modern Direct Democracy—the world's leading network of people who work in direct democracy—which has spawned a leading global NGO, Democracy International (on whose board he serves), the Swiss Democracy Foundation, and the Direct Democracy Navigator think tank, based in Liechtenstein. The next two Global Forums will be held in Lucerne, Switzerland in 2022, and in Mexico City in 2023.

Joe was formerly a reporter at the Los Angeles Times, Wall Street Journal, and Baltimore Sun, and a senior fellow at the New America Foundation. He is co-author of California Crackup: How Reform Broke the Golden State and How We Can Fix It, and author of The People's Machine: Arnold Schwarzenegger and the Rise of Blockbuster Democracy. He is the original author of the new Magna Charta, commissioned by the city of Rome, on local democracy, to which cities around the world are signatories.

He, his wife Anna, and their three sons live in the San Gabriel Valley, where he coaches Little League baseball.



AJAY MOHAN

Executive Director, Democratic Party of Orange County

Ajay Mohan is an Orange County native with nearly a decade of experience electing Democrats across California, where he has worked on successful campaigns for public office from water board to Congress. He was selected as part of the top 4% of campaign operatives in the country to attend the Blue Leadership Collaborative, a Congressional campaign management program, and has since taken those skills to the Democratic Party of Orange County.



At age 24, Ajay is the youngest Executive Director to helm the Party, and the first Indian American to hold that role. As the Party's 2020 Political Director, he organized strategies to successfully flip 20 local seats from red to blue.

Ajay is a product of local public schools and currently serves as a Commissioner for the City of Irvine.

RYAN OLE HASS

Past President, Greater Los Angeles REALTORS

Ryan Ole Hass began his real estate career in 2004 after a successful corporate and private consulting career in marketing and business development. Almost immediately, Ryan's marketing and technology expertise enabled him to work with some of the most successful realtors in Los Angeles and globally. He has represented clients across Los Angeles County in commercial leasing and sales, from retail and office space to industrial, food service, and mixed use.



Ryan served as COO of a property management firm and was instrumental in its massive growth. His fun-loving personality, communication skills, and no-nonsense approach to business have contributed to his continuous stream of referrals.

Ryan is proudest of his accomplishments in serving his community and members of his REALTOR® organization. He says he feels best when he improves the happiness, success, and quality of life of others.



JOE LEIGHTON

Senior Corporate Affairs Representative, Chevron

Joe Leighton joined Chevron in 2017 and currently serves as a Senior Corporate Affairs Representative. In this role, he primarily represents Chevron's El Segundo Refinery before governmental entities in Southern California. Joe previously served as Chevron's Government Affairs Representative in the northeast region.

Prior to joining Chevron, he was the Associate Director in the American Petroleum Institute's Pennsylvania office representing all aspects of the oil and natural gas industry.

Joe gained state government experience by serving in the administrations of two Pennsylvania governors and the Pennsylvania State Senate.

He is a veteran of the U.S. Army. Joe served in the 101st Airborne Division and the 385th Military Police Battalion.

SUSAN SIFUENTES TRIGUEROS

BizFed PAC Chair

Senior Regional Public Affairs Manager, Southern California Gas Co.

Susan Sifuentes Trigueros is a regional corporate leader and widely respected government and public relations professional with more than two decades of experience in corporate, governmental, community, and media relations. Susan joined Southern California Gas Co. in 1982 and eventually became one of the first Latinas in the External Government Affairs department.



Susan currently serves as Senior Regional Public Affairs Manager, overseeing staff members responsible for government relations, charitable community giving, and media strategies in Los Angeles County. Southern California Gas Co. has been delivering natural gas to its customers for more than 140 years and is the nation's largest natural gas distribution utility, providing service to more than 20 million consumers in hundreds of communities throughout central and Southern California.

Susan has a long history of advocating for Latinas and the Latino community. She has served as a hands-on leader with numerous organizations, including the National Association of Latino Elected Officials (NALEO), the Mexican American Legal Defense and Educational Fund (MALDEF), The East Los Angeles Community Union (TELACU), the Mexican American Opportunity Foundation (MAOF), the Southwest Voters Registration Project, the University of Southern California Latino Alumni Association, and Hispanas Organized for Political Equality (HOPE).

During Susan's tenure as Chair of the USC Latino Alumni Association, she was instrumental in raising approximately \$2 million of the goal to establish a permanent \$5 million endowment.

Susan has also supported the mentoring program "Girls Today, Women Tomorrow," which empowers girls to create their own opportunities for life success through actively contributing to their communities.

Susan and her husband Mario are the proud parents of seven children and three grandchildren.

FRANK CÁRDENAS

Executive Director, LA City Council Redistricting Commission 2021

Frank Cárdenas has a long record of public service that includes serving as a commissioner of the former Community Redevelopment Agency of the City of Los Angeles, Board of Public Works Commissioner, Chief of Staff and Executive Officer for the Los Angeles County Metropolitan Transportation Authority, and Executive Director of the 2001-2002 Los Angeles City Council Redistricting Commission. He currently serves on the California Fair Political Practices Commission as an appointee of then-Attorney General Xavier Becerra.



Frank has a private law firm that focuses on the areas of business, administrative, and public law. He is also an educator at Cal State University, Los Angeles where he teaches undergraduate and graduate level courses for the College of Business and Economics.

Frank received his J.D. from Harvard Law School and his B.A. in Political Science and International Relations from the University of Southern California.



ROBB KORINKE

Executive Director, Grassroots Lab & **BizFed PAC**

Robb Korinke is a veteran of candidate and ballot measure campaigns across California and beyond. He leads GrassrootsLab's client and campaign activities in Southern California, and specializes in state and local government, open data and transparency issues, online communications, and ballot measure advocacy.

He served for four years as the Executive Director of the Los Angeles League of Cities and has worked with local governments on key policy issues going back to Proposition 1A in 2004.

Robb has managed BizFed PAC since 2014 and is the Publishing Editor of CaliforniaCityNews.org, CaliforniaCountyNews.org and CalSchoolNews.org.

He began his career with the Democratic Congressional Campaign Committee in Washington, D.C. and in state and local Democratic politics in California.

In 2007, he joined the Orange County Business Council as Communications Director, overseeing all aspects of the organization's interaction with local and statewide media. He also crafted messaging for advocacy efforts on behalf of the business community in Orange County.

He lives in Long Beach, California, where he has served as Chair of Mayor Robert Garcia's Technology & Innovation Commission.



CAROLYN WILLIAMS

Co-Chair, LA County Citizens Redistricting Commission

Carolyn Williams partners with nonprofit leaders and organizations to create meaningful change. She is a professional, certified life, and executive coach and volunteers as a restorative justice mediator working with youth, impacted persons, and families to achieve mutually agreeable outcomes. With more than 35 years in consulting and corporate America, her experience covers organizational development, training and development, and corporate philanthropy.



Carolyn's professional background includes evaluation research, large-scale systems change, creating and managing large philanthropic initiatives, employee program development, and community leadership. She has evaluated cultural change programs; trained managers and leaders; managed multimillion-dollar philanthropic budgets, employee programs, and community initiatives; and led or worked with small to large nonprofit organizations and institutions.

Carolyn serves on the boards of the Dymally Institute at California State University, Dominguez Hills; Center for Nonprofit Management; Towne Street Theater; Lynwood Education Partners Foundation; Executive Support Network; and Women in Leadership Vital Voices.

Carolyn has been recognized over the years for her community work, receiving awards from All Peoples Community Center, the Downtown Women's Center, United Way of Greater Los Angeles, National College Resources Foundation, Southeast Communities Intervention & Prevention Programs, NAACP, Sickle Cell Disease Research Foundation, and the Greater African American Chamber of Commerce, among others.

Carolyn holds a B.A. in psychology from Louisiana Tech University, a Master of Public Administration from USC, and professional certificates from Boston College, USC, the Center for Nonprofit Management, and the Association for Talent Development.

She has completed other graduate-level study at California State University, Los Angeles (psychology); Cal Poly Pomona (business management); and USC where she completed all Ph.D. coursework in applied behavioral science. She is also a fellow or graduate of California Connections, Leadership California, Leadership Southern California, and the Management Action Program.

Carolyn enjoys theater, traveling, and reading. She has one son, Joshua, who is a chef, actor, and singer.

TRACY HERNANDEZ

BizFed Founding CEO

Tracy Hernandez is the Founding Chief Executive Officer of the Los Angeles County Business Federation (BizFed). The nonprofit, massive grassroots alliance of 215 top business networks counts among its more than 410,000 business members a diverse demographic, industry sector, and geographic array of small and large employers of more than 5 million people in Southern California.



BizFed advocates for positive projects and public policy; manageable rules, regulations, and taxes; and a regional business climate that fosters civic and community engagement, especially among employers. The bold action, timely intelligence sharing, and empowerment through organizing existing chambers of commerce, trade groups, ethnic business associations, and business improvement districts create a force multiplier effect that strengthens the voice of business to intersect with government at every level, advancing a shared agenda critical for economic vitality.

BizFed has grown in scope and impact since its launch in 2008. Tracy also founded and oversees BizFed Institute and BizFed Political Action Committee. BizFed Institute is a 501(c)(3) that acts as the educational, research-driven, polling, and convening arm of BizFed. BizFed PAC works to elect public officials with job-creating focus and ability, and is the only business political action committee focused on local elections in all 88 cities in LA County.

In addition, Tracy serves as President of IMPOWER Group, Inc., a business advisory company specializing in startups or strategic transition utilizing unlikely partnerships to achieve greater impact.

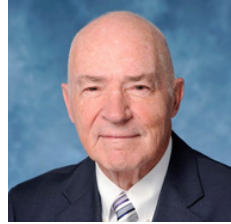
During her time in California, Tracy has given back to communities across Los Angeles by contributing her time, talents, and expertise to a broad range of civic, educational, and charitable organizations. She has served on the boards of Meeting Each Need with Dignity (MEND), LA's BEST Afterschool Enrichment Program, Valley Presbyterian Hospital, The American Institute of Architects, Project Grad, Woodbury University Business School, Valley Economic Alliance, and the Long Beach Symphony.

Business groups, nonprofit organizations, educational institutions, media outlets, and other organizations have honored Tracy with multiple awards for her entrepreneurial spirit, tireless business advocacy, dedication to expanding equality in employment, and leadership within the community.

Tracy is a veteran of the newspaper industry. During her successful 20-year media career, she served as the first female publisher of the Los Angeles Daily News in the paper's nearly 100-year history. A native of Twin Falls, Idaho, Tracy launched her career at The Times News while still in high school. She is a graduate of the College of Southern Idaho and a happy mother and wife.



MEET TEAM BIZFED



David Fleming
BizFed Founding Chair



Tracy Hernandez
BizFed Founding CEO



Julia Deng
Communications Manager



Chris Earle
Business Manager



David Englin
BizFed President



Kevin Harbour
BizFed Institute President



Christopher Im
Operations Manager &
Database Administrator



Sarkis Kotanjian
Vice President of
Development



Noly Lallana
Accountant



Lara Larramendi
Director of Government
Relations



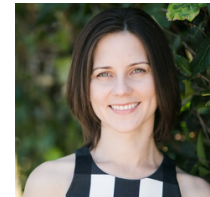
De'Andre Valencia
Chief Advocacy Officer
BizFed PAC President



Mitchell Vieyra
Senior Program Director



Chris Wilson
Public Policy Manager



Sarah Wiltfong
Senior Policy Manager

THANK YOU, POLITICAL FORECAST SPONSORS!

TITLE SPONSOR



IMPACT SPONSORS



HOST SPONSOR



COMMUNITY SPONSORS



GRASSROOTS SPONSORS



WSPA



FIVEPOINT.



MAJESTIC REALTY CO.



MEDIA SPONSORS



PROGRAM SPONSOR

